



**Cleveland
Homes** RC: 1761476

REAL ESTATE DEVELOPMENT & INVESTMENT

FAIRVIEW COURT



Cleveland Homes applies technological innovations to housing in order to deliver sophisticated modern homes to dynamic families. Our dream is not just to provide housing, but to provide the kind of housing that matches the fast pace of 21st century technological advancements.

Our mission is to become Nigeria's most trusted and technologically advanced name in real estate and housing delivery.





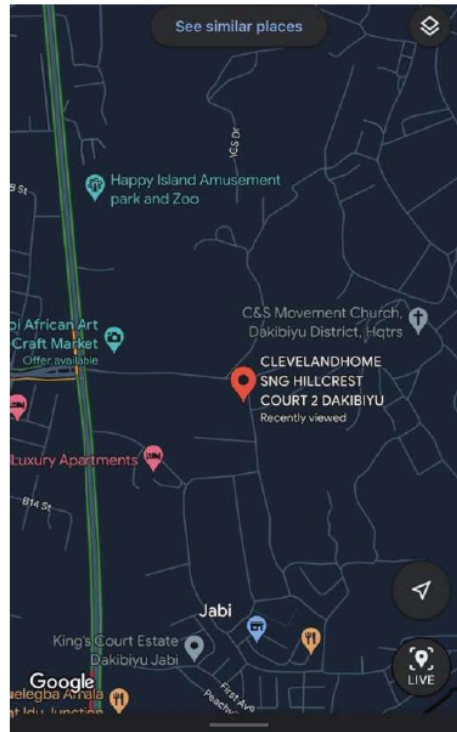
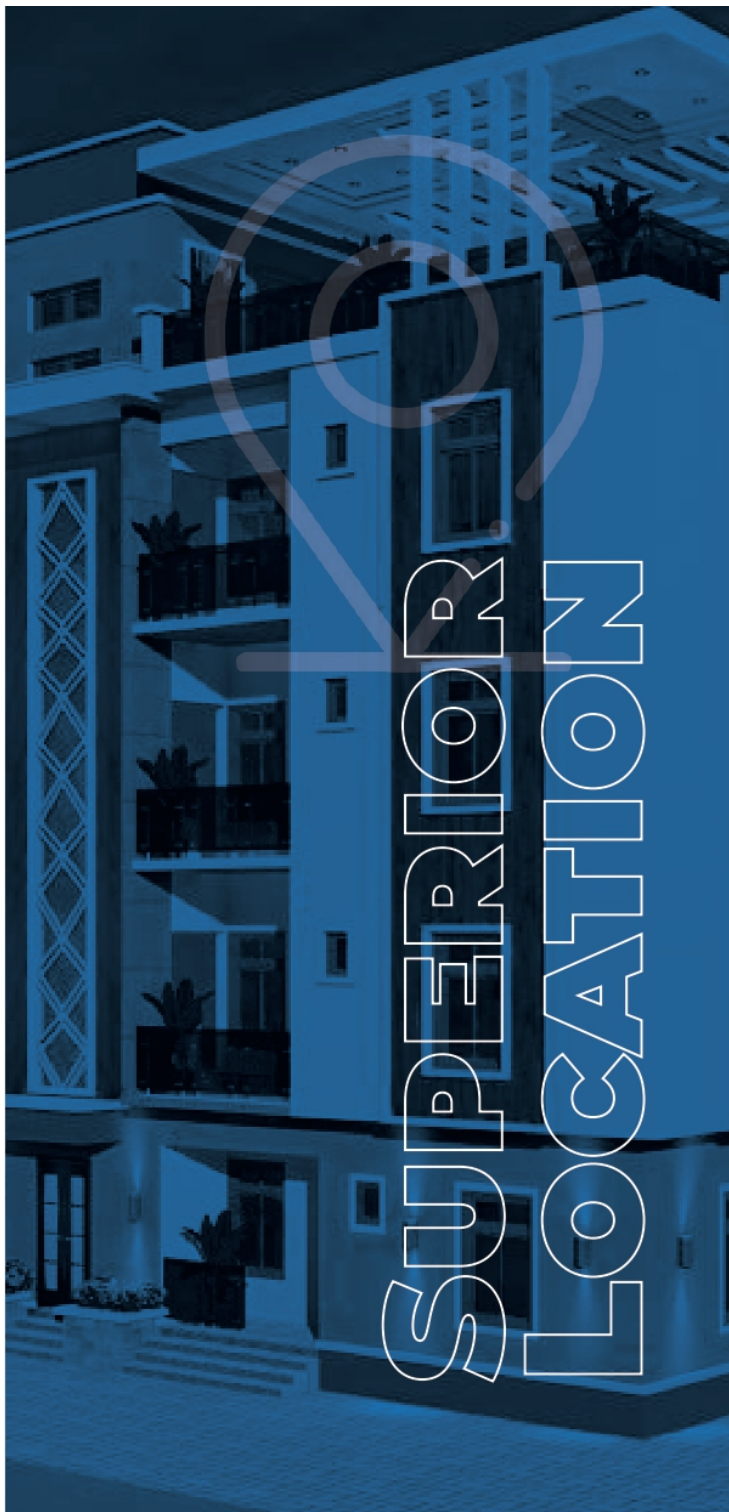
FAIRVIEW COURT

Fairview Court is an household of 23 Estate of 5 unit of 4 bedroom terrace duplex with BQ and blocks of flat of 2bedrooms and 3bedroom located at Dakibiyu in Abuja.

It is Cleveland Homes project and leads the way for new Nigerian living, powered by modern technology-driven homes.







LOCATION & ACCESSIBILITY

Fairview Courtis located in Dakibiyu, a growing suburb that crowns the Abuja Outer Northern Expressway (ONEX). This location provides special advantages in terms of accessibility, proximity to facilities, and beautiful scenery.

BEAUTIFUL SCENERY

Fairview Court is sited within a neighbourhood with enhanced visual quality. Sitting on a high terrain, the balconies at opposite sides of a Fairview Court home allows residents to enjoy the pleasing panoramic views that Dakibiyu has to offer. The drive to Fairview Court is also enriched by tree-lined median and side strips that provide a delightful green aesthetic.





ADVANCED TECHNOLOGY

Convenience Guaranteed through Innovative and Smart Technology

Fairview Court applies innovative technology in home automation, security, and safety to offer residents an improved and modern living experience.

HOME AUTOMATION SYSTEMS

Fairview Court home are equipped with state of the art home automation systems for the best living experience. The systems give residents seamless control of the home through their smartphones, tablets, or other devices connected to a wireless network. Appliances, home electronics, doors, curtains, lights, watering systems, house alarm, and energy savers (like motion lighting) are controlled remotely and conveniently with Fairview secure home automation systems.

SAFETY AND SECURITY

Every corner of the outdoor environment is monitored 24/7 with strategically positioned CCTV cameras. This provides extra assurance and peace of mind for you and your family. Access into Fairview (and the homes within) is also controlled by an automated gate (and main door) system for ultimate security.



Voice and App Control



Video Door Entry System



Smart/Motion Lighting



Appliance Control



Smart System Routine



Energy Management



Automated Security



Automatic Curtains/Windows blind

24/7

AMPLE
SERVICES

Good riddance to interruption of power and water supply

Fairview Court offers wide-ranging estate services including reliable supply of power and water, maintenance, sanitation and estate landscaping, and a communal pool for leisure.



WATER SUPPLY

Fairview Court is served by a deep drilled bore-hole/ waterboard that supplies potable water to all outlets within the homes and the outdoor environment. This provides a ceaseless flow of water for domestic use and ensures that all Fairview Court residents' water needs are always met.

POWER SUPPLY

Fairview Court is fortified with solar inverter and backup with a heavy-duty generator that supplies power to the residents as an alternative to the country's generally unreliable power supply. The noiseless generator has the capacity to power heavy home appliances such as air conditioners and refrigerators, guaranteeing that residents never lack electricity when they need it.

SANITATION

Fairview Court will be managed by a reputable estate management company that oversees the cleaning, landscaping, and general maintenance of the estate to ensure that it continuously looks as good as new.



SITE
AND
BUILDING
PLANS













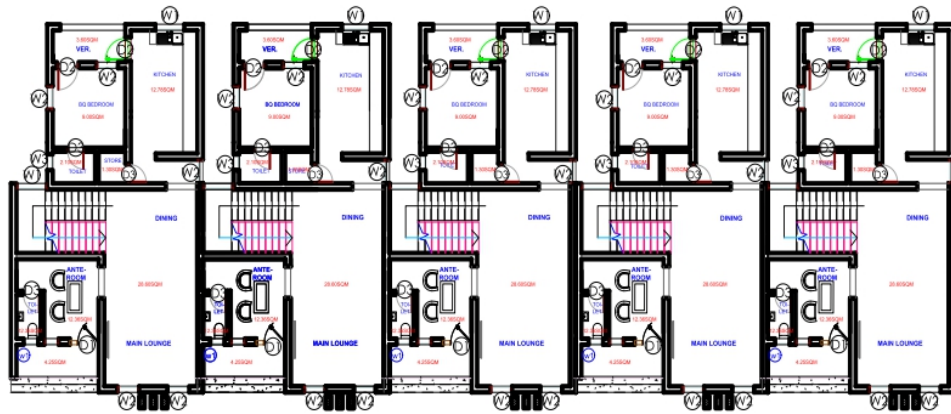




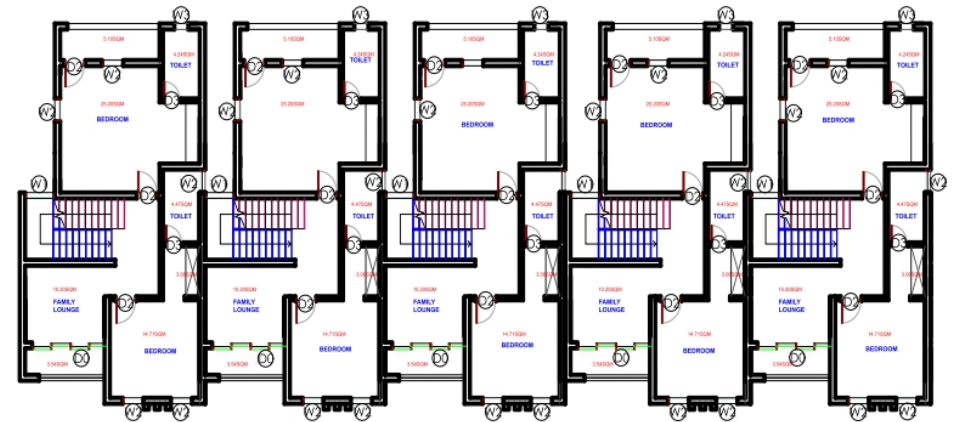
THE ESTATE ENVIRONMENT

Fairview Court Estate site covers a land area just over 3400sqm with an east-side entry. The houses face northward, protecting the bedrooms from sunrise and sunset glints. However, those views can be enjoyed from balconies at either side. The estate is well landscaped with vegetal cover on over 60% of the unbuilt area and sufficient, allocated, car parking spaces, basketball court, swimming pool, lawn tennis court, playground, power house, gym etc.





GROUND FLOOR PLAN



FIRST FLOOR PLAN



SECOND FLOOR PLAN

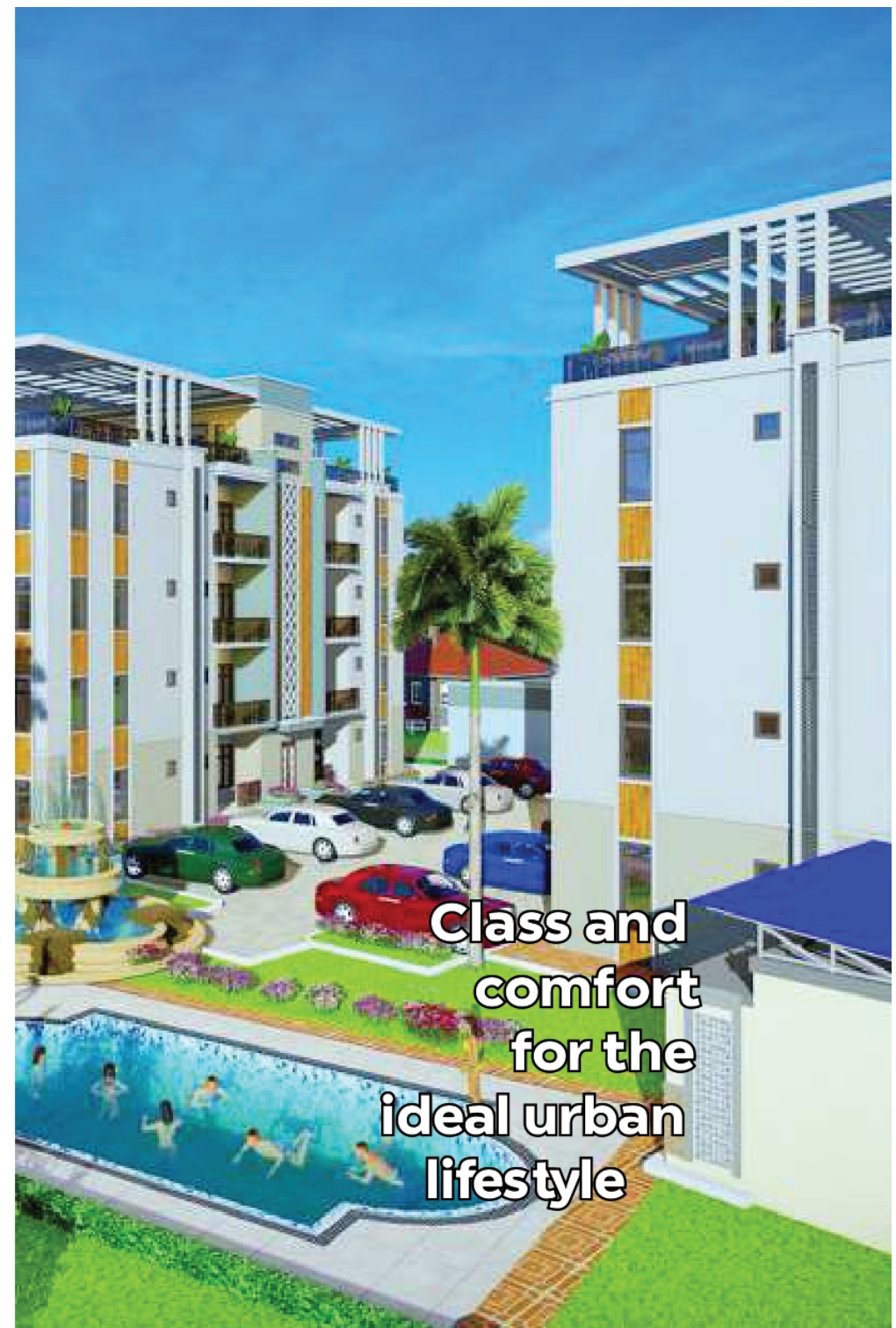
TERRACE DUPLEX FLOOR PLAN

A peek into life at Fairview Court Estate



FINISH TO SPECIFICATION

- Good framework in roof
- Long span aluminium roof tiles
- Laser cut burglary
- Aluminium casement windows
- Turkish security front/back door, bulletproof, automated
- Spanish tiles
- Glass banister and silver handrail (staircase)
- Bosch appliances (oven and cooker)
- Energy efficient lighting





**Cleveland
Homes** RC: 1761476

REAL ESTATE DEVELOPMENT & INVESTMENT

The information contained in this brochure has been presented to the best accurate degree, to ensure that it is not misleading in any way. Note that floor plans and other specifications as presented herein may be subject to change as project progresses. All pictures, furniture, and accessories shown are for illustration purposes only.

B1, Plot 777 Iro Dan Musa Street
Jabi, Abuja.

📞 CUSTOMER SERVICES CONTACT CENTER:
+2347041009061

SALES & MARKETING OPERATIONS CALL:
+2347041009062

✉️ customercare@clevelandhomesng.com
info@clevelandhomesng.com

📍 [clevelandhomesng](https://www.instagram.com/clevelandhomesng)

📍 [clevelandhomesng](https://www.facebook.com/clevelandhomesng)

🌐 www.clevelandhomesng.com